

Corrected Fig. 3 for

Turtiainen, M., Miina, J., Salo, K. & Hotanen, J.-P. 2013. Empirical prediction models for the coverage and yields of cowberry in Finland. *Silva Fennica* 47(3). 22 p.

This correction was posted on the *Silva Fennica* website on May 2014.

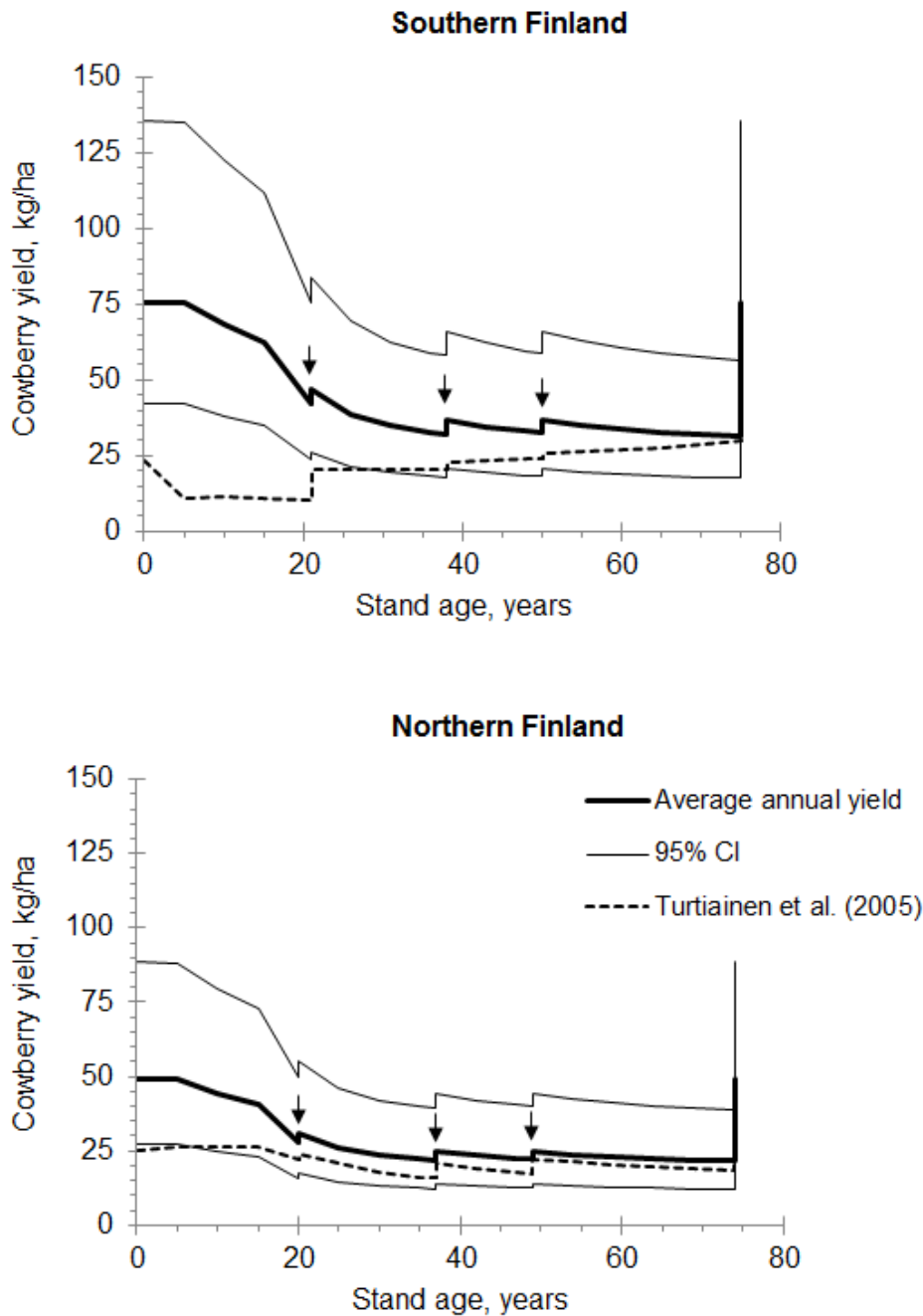


Fig. 3. Predicted average annual yields of cowberry and their 95% confidence intervals in pine stands on site IV (i.e. sub-xeric heath forest) in southern and northern Finland. The development of stands was simulated using the Motti simulator (arrows indicate thinnings). Predictions were calculated using Models 1 and 2 (Tables 3 and 4), and were also compared with the estimates computed using the models of Turtiainen et al. (2005).