

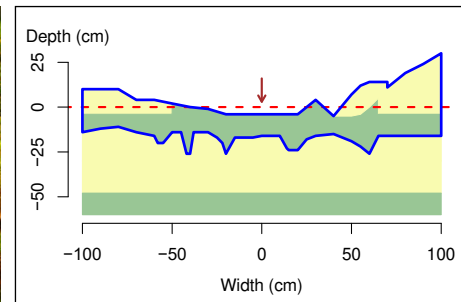
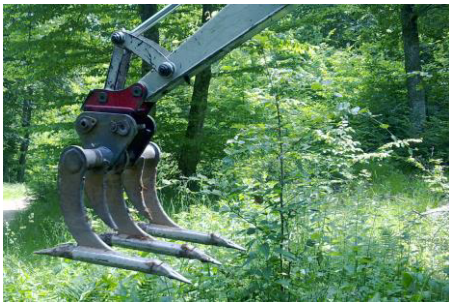
Supplementary file S1

Fig. S1. Views of MSP tools, study plots and cultivation profiles after MSP. Lightweight excavator (top), deep scarifier (DS) and multifunction subsoiler (MS) tools (left), plots one year after site preparation (middle), and cultivation profiles two years after site preparation (right) in treatments DS and DS+MS. Cultivation profiles were described in pits excavated perpendicular to the planting row, following Collet et al. (2020). The blue line indicates the volume of soil prepared by the tool; the dotted red line indicates the initial ground level; and the arrow indicates the location of the planted seedling. Soil volumes were classified into three classes of quality (green: soil structure favourable to root growth; yellow: intermediate; red: soil structure unfavourable to root growth).

Lightweight excavator



Deep Scarifier (DS)



Deep Scarifier + Multifunction Subsoiler (DS+MS)

