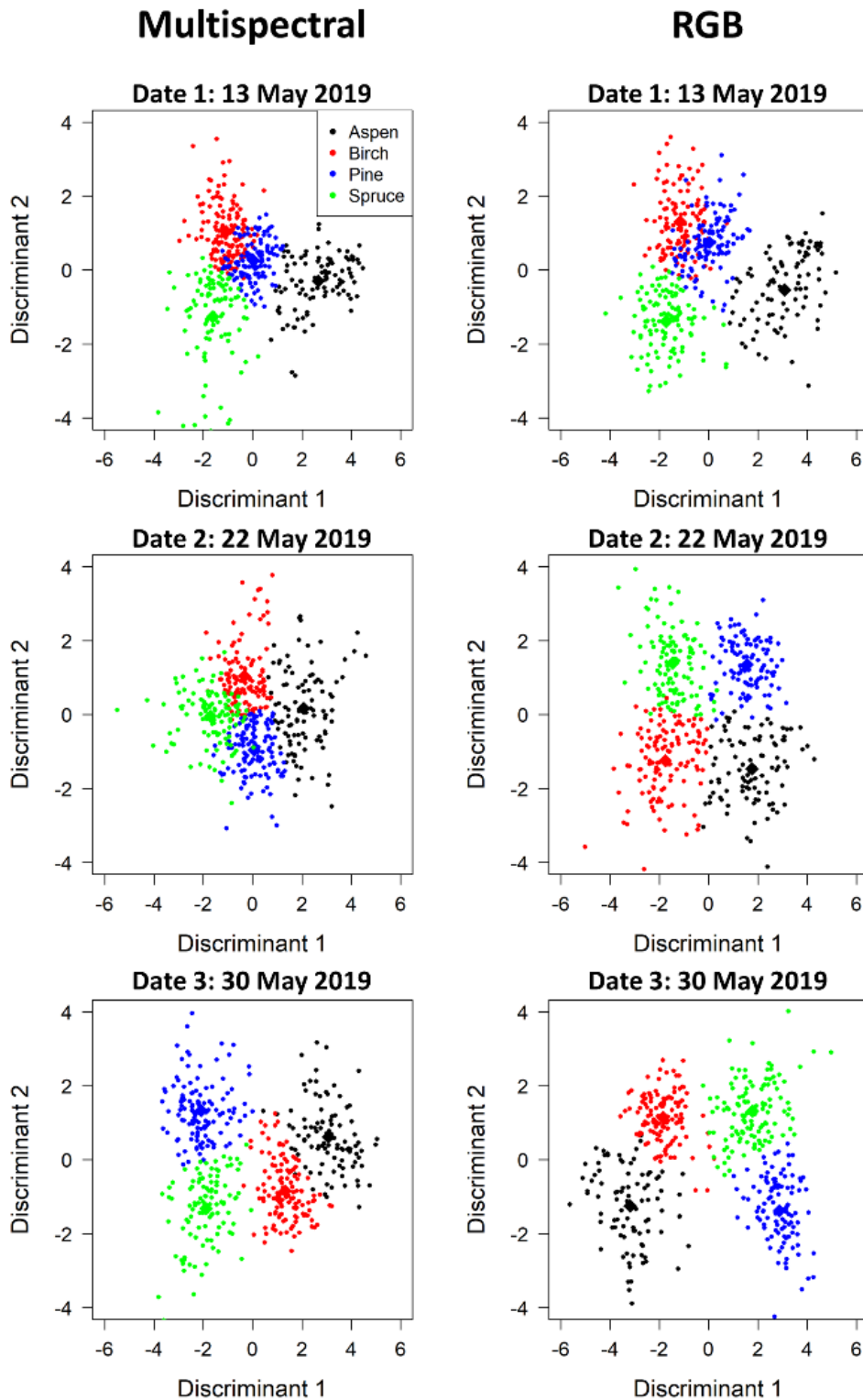
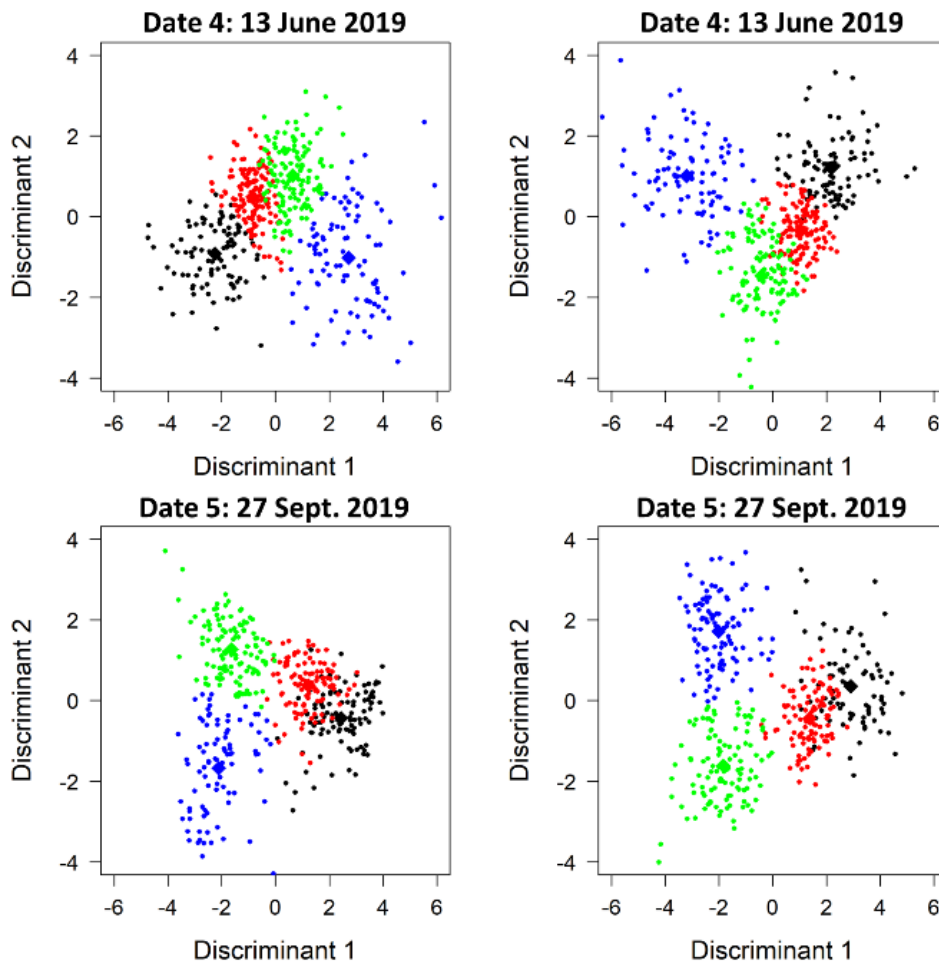


Hardenbol A.A., Kuzmin A., Korhonen L., Korpelainen P., Kumpula T., Maltamo M., Kouki J. (2021). Detection of aspen in conifer-dominated boreal forests with seasonal multispectral drone image point clouds. *Silva Fennica* vol. 55 no. 4 article id 10515. <https://doi.org/10.14214/sf.10515>

### Supplementary file S6





**Figure S6.** Class separation by two discriminant axes in the aspen-optimized tree species classification by multispectral-based and RGB-based segmentations on the five inventoried dates.