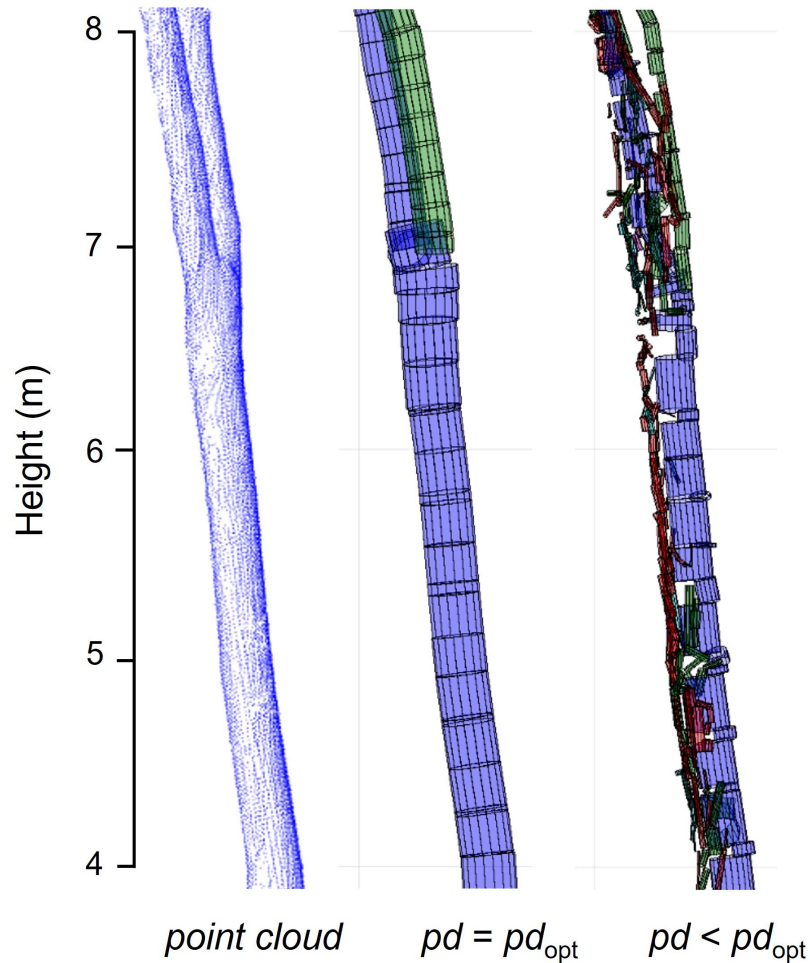


## Supplementary file S2



Examples of the reference modulation point cloud and its QSM reconstructions at a bifurcation in the upper part of the main stem of ash #2. In the middle, a model with the optimal *PatchDiam2Min* (*pd*) parameter results in a smooth fit through the point cloud. On the right, we lowered *PatchDiam2Min* below the optimal, which created more but smaller sized cylinders.