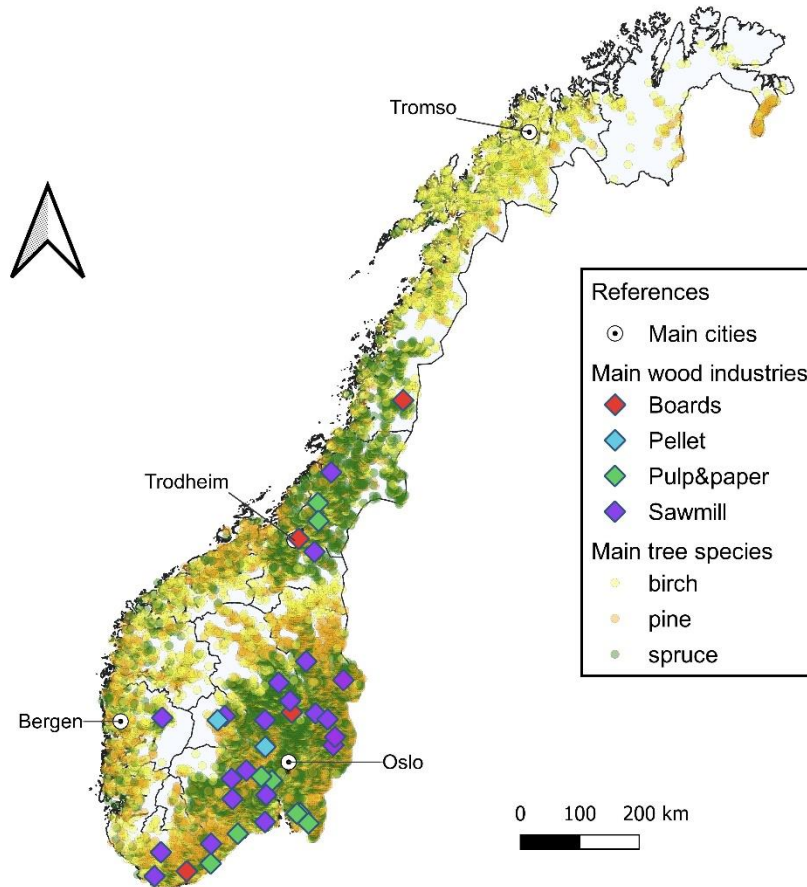


Supplementary file S1

**I. Map: distribution of permanent plots showing main tree species and location of main wood industries in Norway**

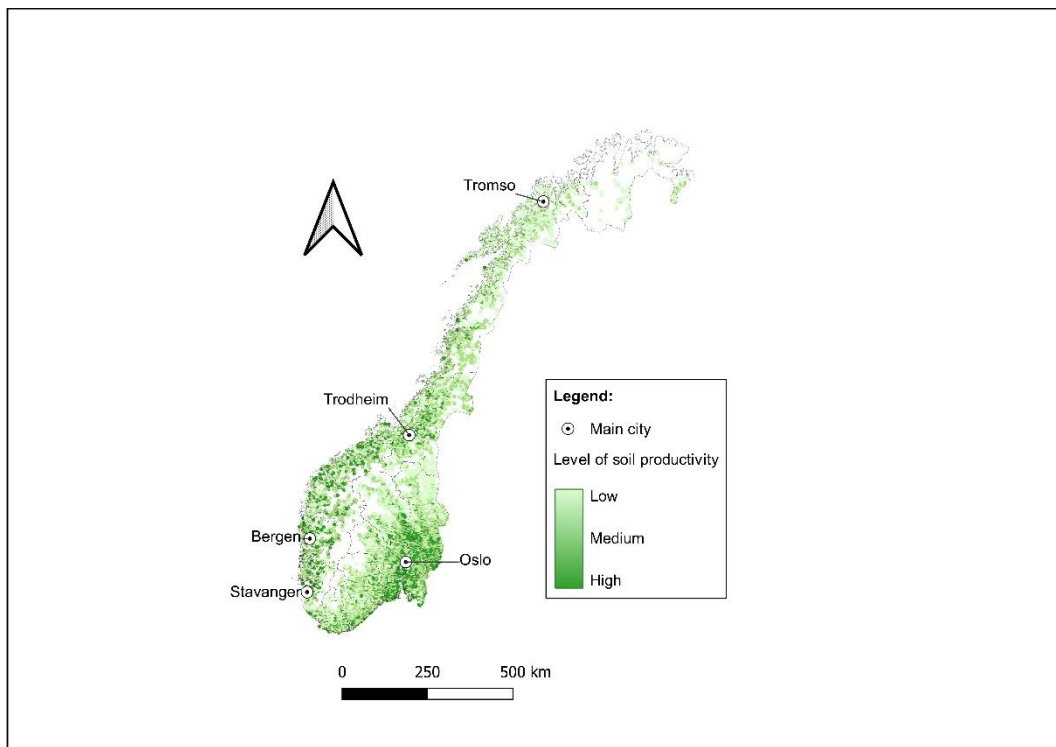


**Table: general characteristic of the 39 main wood industries in Norway, plotted on the map, indicating UTM coordinates and annual capacity updated in January 2023. Based on information from the companies' websites.**

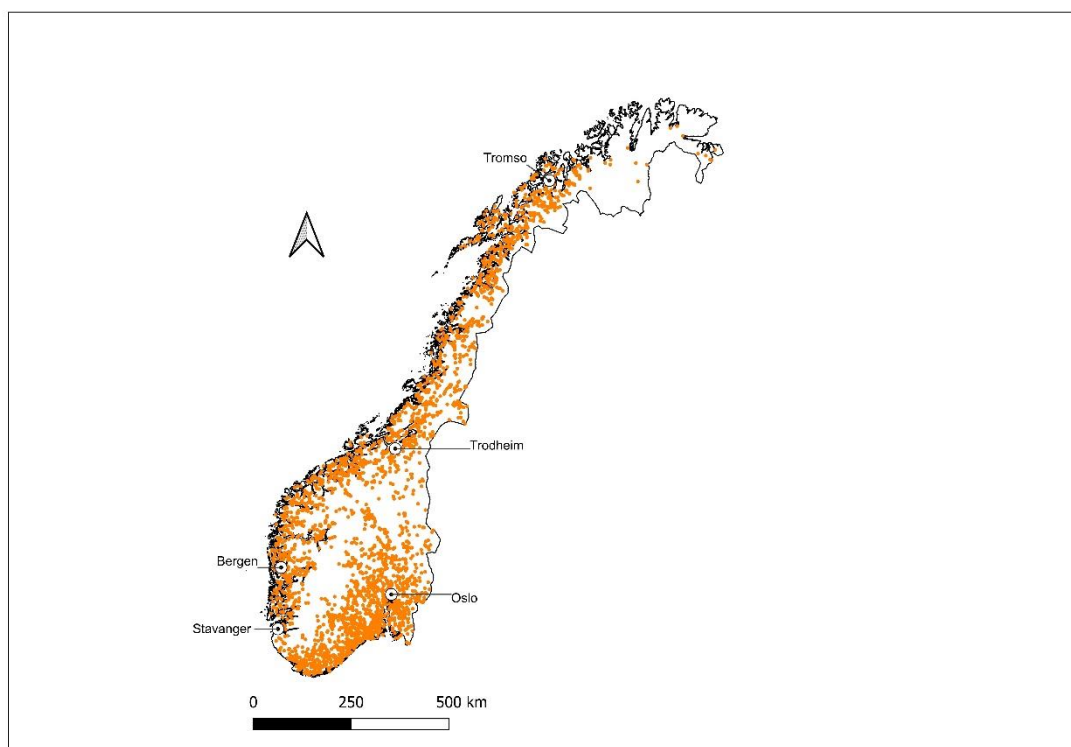
Type of industry	UTM Easting	UTM Northing	Zone	Approx. production capacity	Units
Pulp&paper	621003.2	6572778	32N	160,000	tons
Pulp&paper	602953.2	7096939	32N	130,000	
Pulp&paper	478736.7	6474153	32N	42,000	
Pulp&paper	519424.7	6528491	32N	70,000	
Pulp&paper	606860	7066682	32N	470,000	
Pulp&paper	569061.7	6622731	32N	22,000	
Pulp&paper	621297.5	6572153	32N	40,000	
Pulp&paper	616005.9	6571243	32N	44,000	
Pulp&paper	550412.5	6627942	32N	50,000	
Pulp&paper	637224.3	6556569	32N	550,000	
Boards	653208.8	6734593	32N	360,000	m <sup>3</sup>
Boards	591923.6	6740767	32N	54,000	
Boards	439323.6	6457454	32N	55,000	
Boards	576140.1	7033740	32N	115,000	
Boards	453663.7	7274962	33N	55,000	
Sawmill	479997.7	6724137	32N	Unknown	m <sup>3</sup>
Sawmill	386132.7	6444264	32N	Unknown	
Sawmill	548070.6	6723452	32N	110,000	
Sawmill	563491	6552210	32N	86,000	
Sawmill	476317.1	6507383	32N	150,000	
Sawmill	561616.2	6597716	32N	125,000	
Sawmill	393231.7	6485405	32N	25,000	
Sawmill	565446.6	6788437	32N	200,000	
Sawmill	604744.2	7014342	32N	Unknown	
Sawmill	374878.3	6711575	32N	80,000	
Sawmill	632245	6742561	32N	50,000	
Sawmill	587206	6759800	32N	110,000	
Sawmill	524412.4	6635829	32N	90,000	
Sawmill	552670.2	6678687	32N	220,000	
Sawmill	505306.5	6585922	32N	70,000	
Sawmill	620666.1	7150920	32N	105,000	
Sawmill	653219.1	6734592	32N	195,000	
Sawmill	608136.7	6828844	32N	79,000	
Sawmill	500781.7	6619985	32N	4,000	
Sawmill	335541.9	6691541	33N	125,000	
Sawmill	338484.2	6705560	33N	110,000	
Sawmill	352861.7	6801744	33N	73,000	
Pellet	552716	6678718	32N	80,000	tons
Pellet	468618	6716008	32N	30,000	

**II. Map: spatial distribution of permanent plots from the National Forest Inventory data (2015-2019) showing site index levels across Norway.**

Definitions of the site index levels can be found in the paper.



**Ungulate forage Map: spatial distribution of permanent plots from the National Forest Inventory data (2015-2019) showing in orange color where at least one of the following tree species were present: rowan, (*Sorbus aucuparia*), aspen (*Populus tremula*), or sallow (*Salix caprea*)**



**Warm broadleaves Map: spatial distribution of permanent plots from the National Forest Inventory data (2015-2019) showing in green color where at least one of the following tree species were present: lime (*Tilia cordata*), common ash (*Fraxinus excelsior*), oaks (*Quercus robur*, *Quercus petraea*), European beech (*Fagus sylvatica*), common elm (*Ulmus glabra*), Norway maple (*Acer platanoides*), or sweet cherry (*Prunus avium*)**

