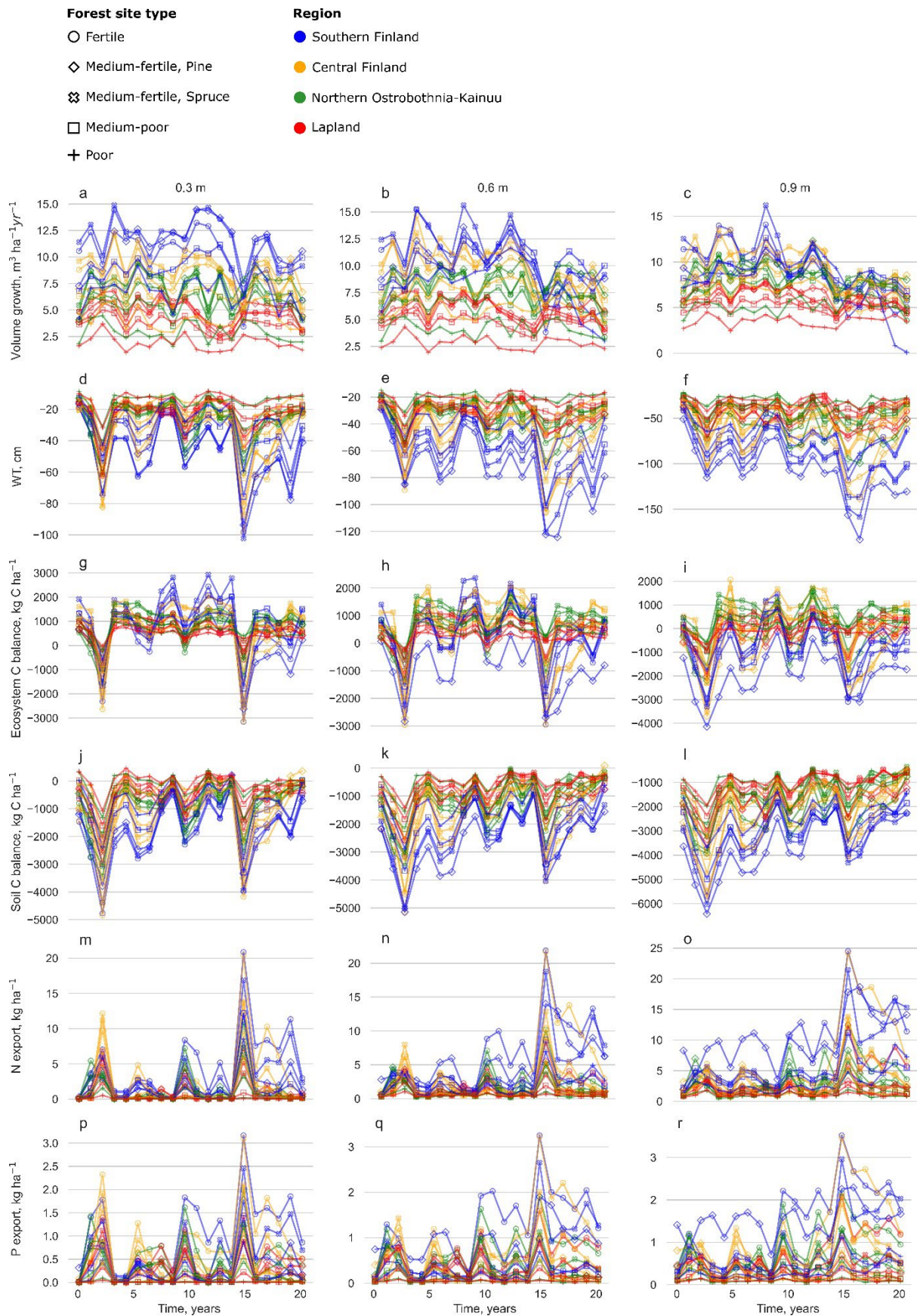


Saari A., Palviainen M., Niemi M.T., Laurén A. (2025). Impacts of reduced ditch network maintenance and ditch shallowing on ecosystem services of peatland forests in Finland. *Silva Fennica* vol. 59 no. 3 article id 25032. <https://doi.org/10.14214/sf.25032>

## **Supplementary file S5**

**Mean annual values for the reference scenario.**



**Figure S5.** Mean annual values for the reference scenario for volume growth (a–c), ecosystem C balance (g–i), soil C balance (j–l), and N (m–o) and P exports (p–r) during a

20-year period and annual difference in water table (WT) (d–f) in different site types and regions. Each site was simulated with 0.3 m (leftmost column), 0.6 m (centre column) and 0.9 m (rightmost column) initial ditch depths. Marker colours indicate geographical location (Fig. 1) and marker style different site fertility classes (Table 3). Note different scales in the y-axis between different ditch depth scenarios. Years 3 and 15 were dry and warm years 2006 and 2018, respectively.